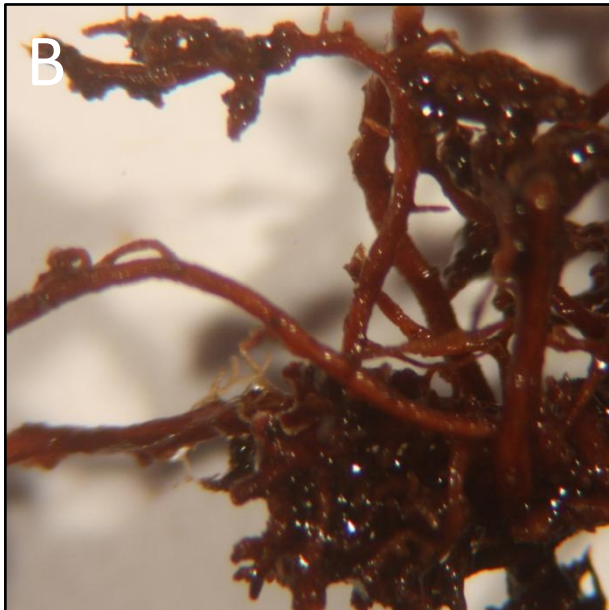
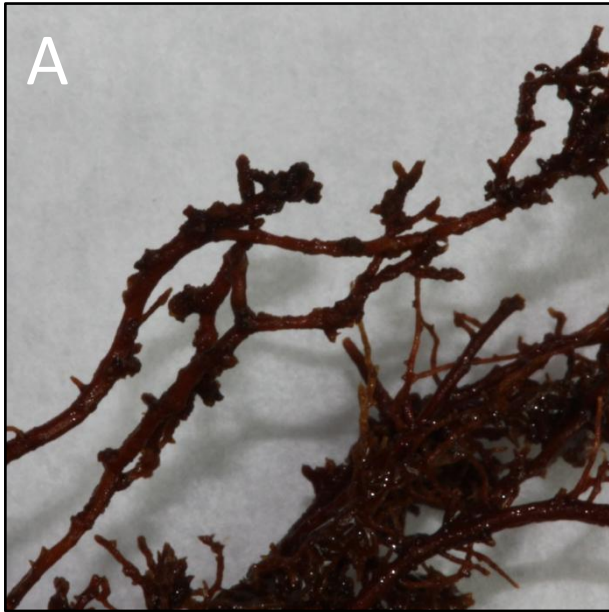
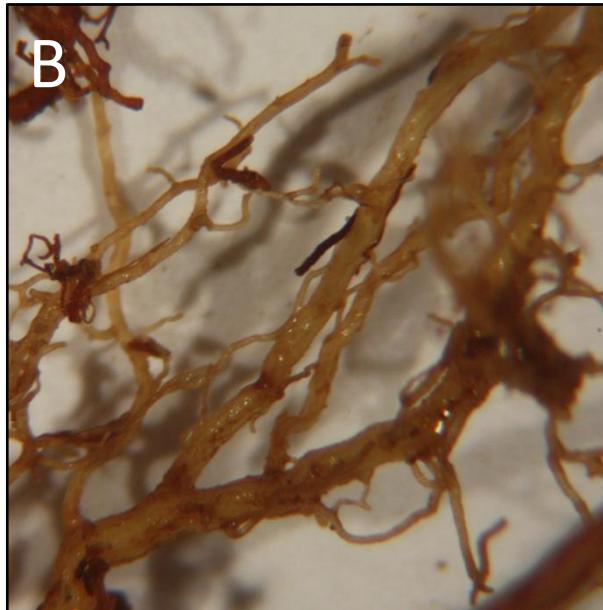
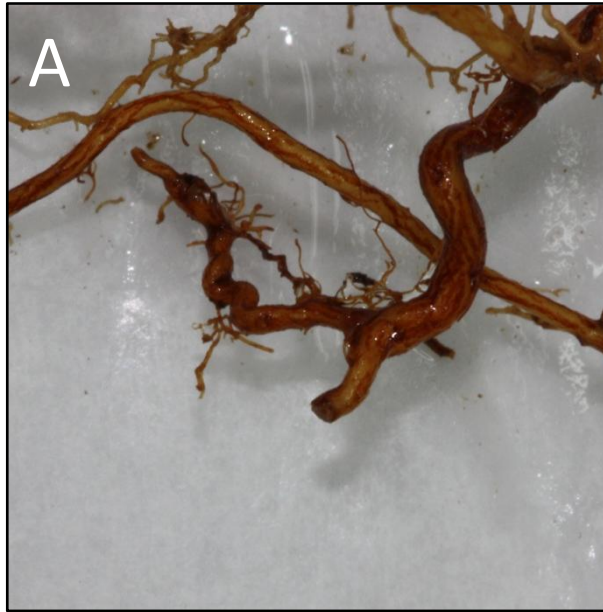


Field: 1 – “sick field” [less or no feeder roots, if present they were stunted]

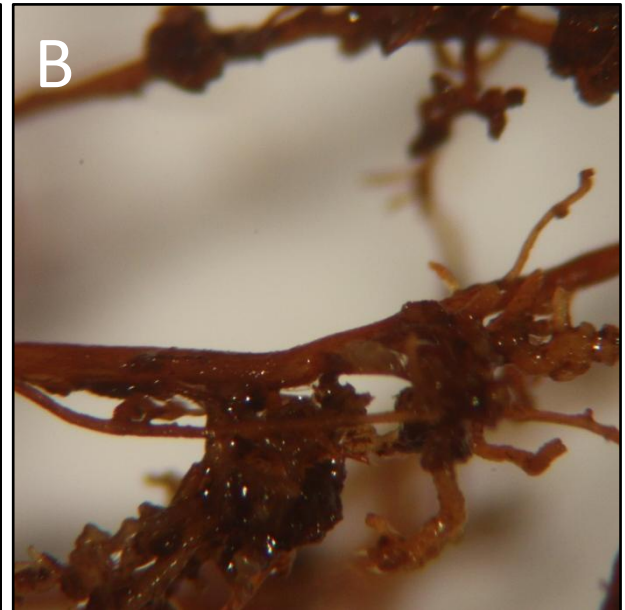
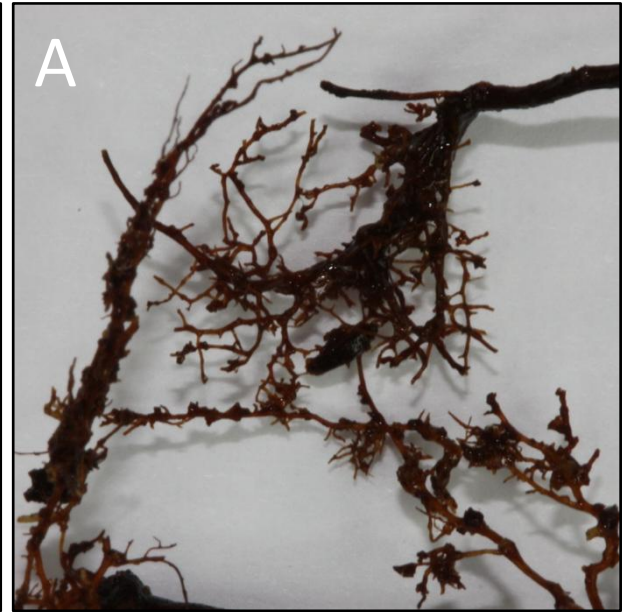
Sample – 1 (A & B)



Sample – 2 (A & B)

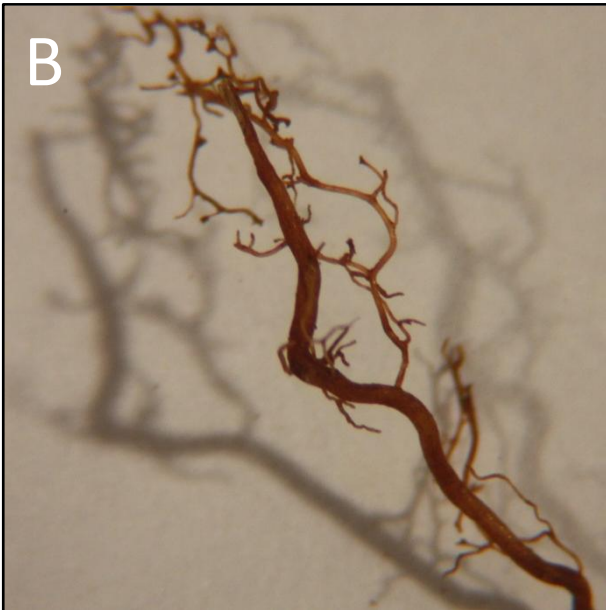


Sample – 3 (A & B)

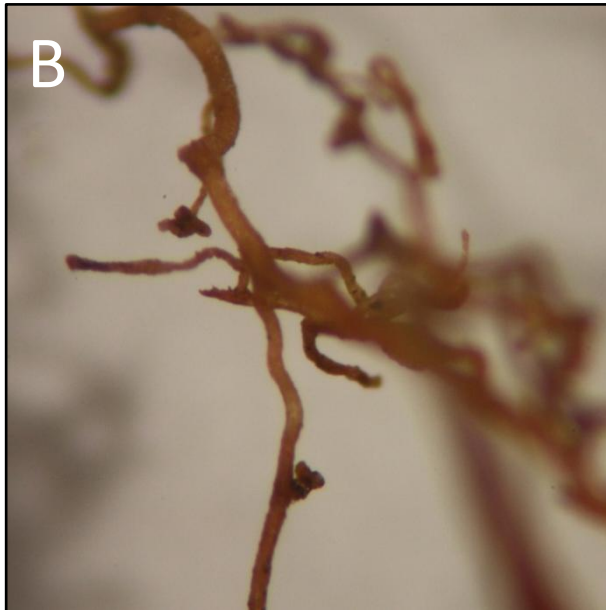


Field: 2 – “sick field” [less or no feeder roots, if present they were stunted]

Sample – 1 (A & B)



Sample – 2 (A & B)



Sample – 3 (A & B)





Field: 3 – “sick field” [relatively more feeder roots, but stunted]

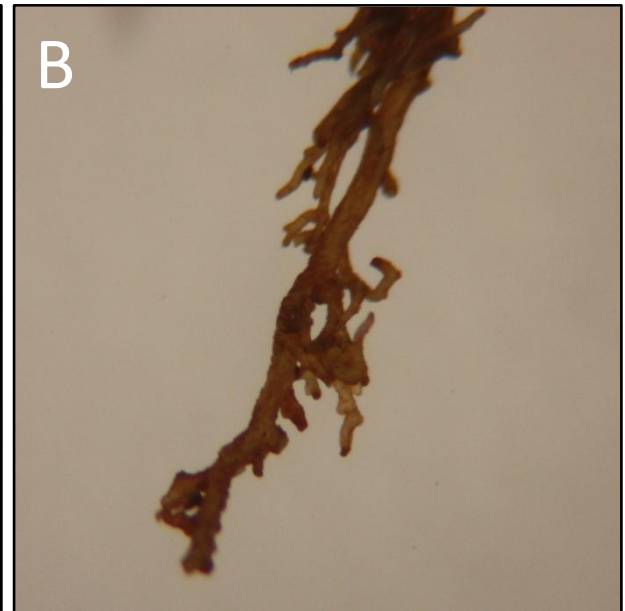
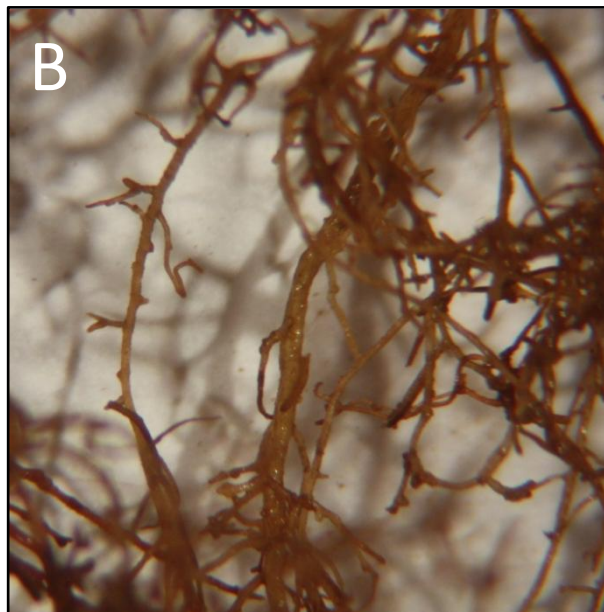
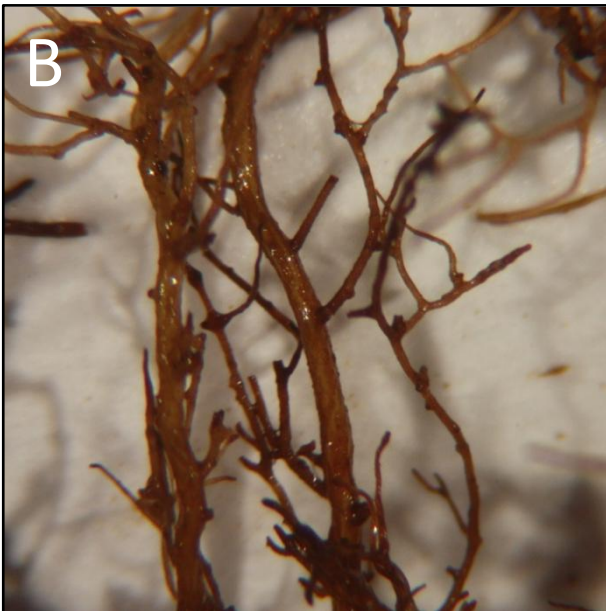
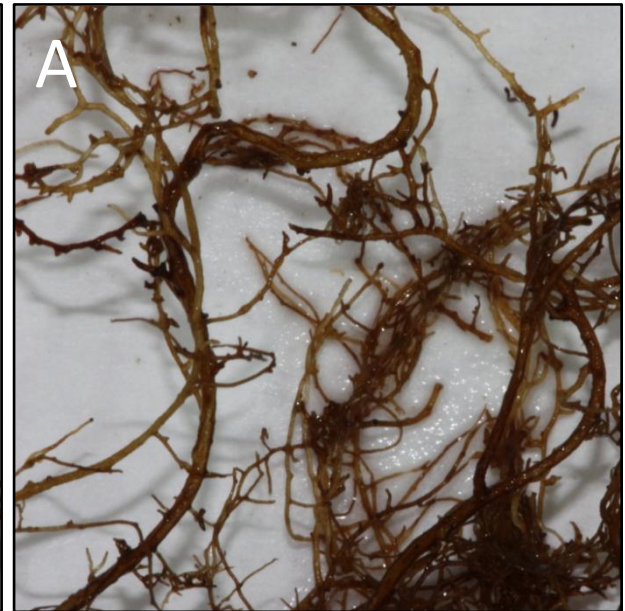
Sample – 1 (A & B)



Sample – 2 (A & B)



Sample – 3 (A & B)





Field: 4 – Research Farm [healthy feeder roots]

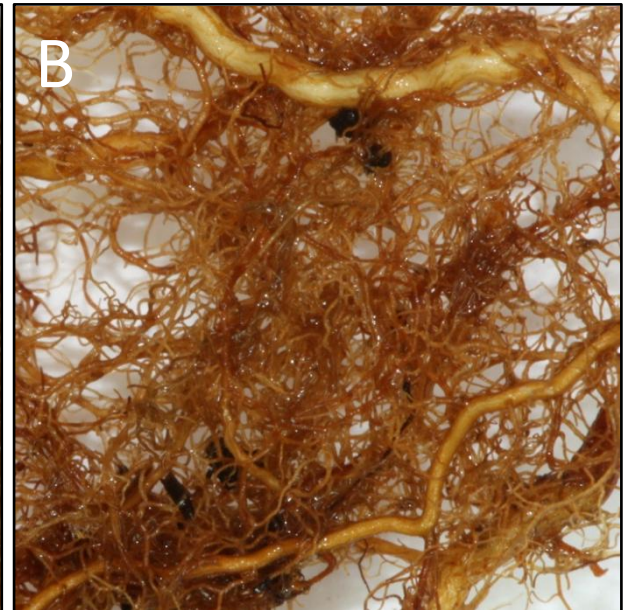
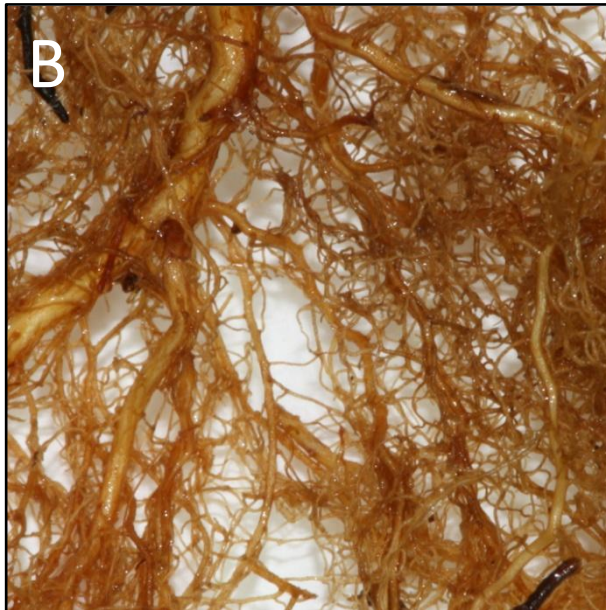
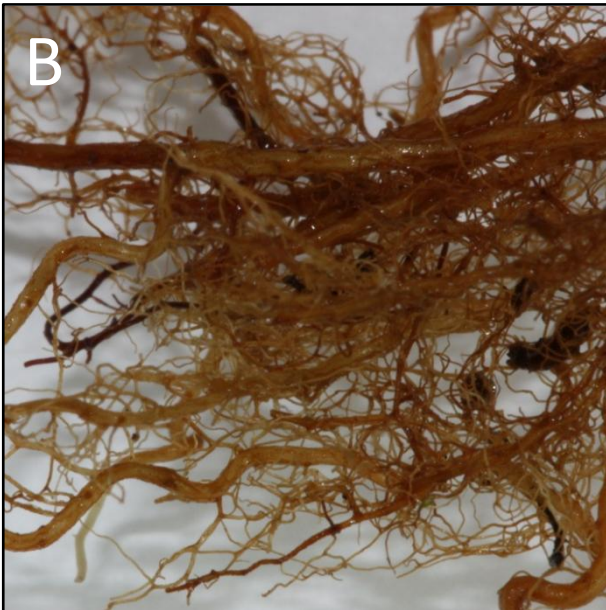
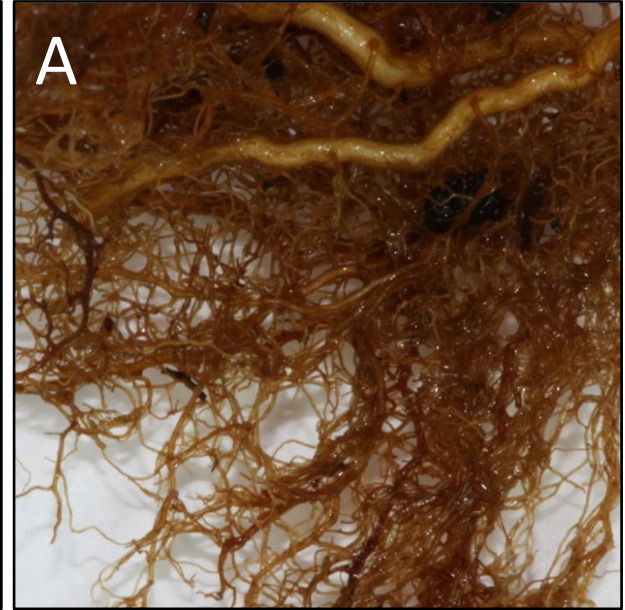
Sample – 1 (A & B)



Sample – 2 (A & B)



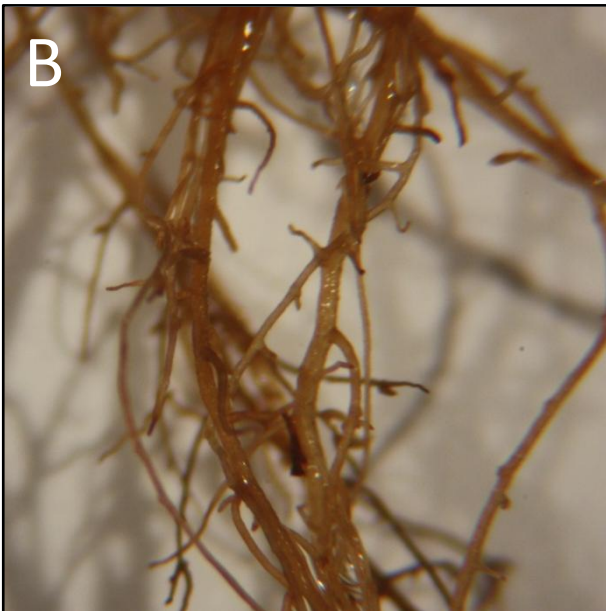
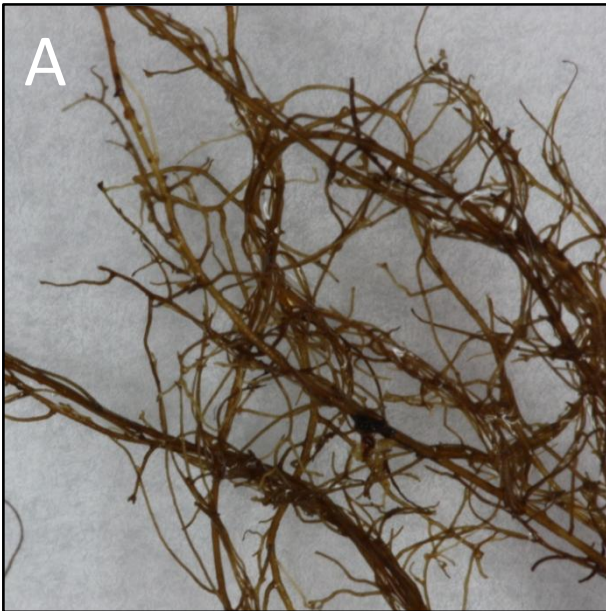
Sample – 3 (A & B)



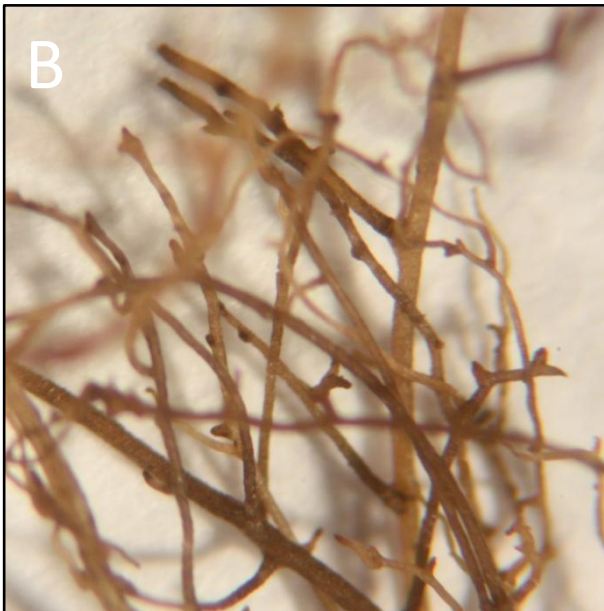
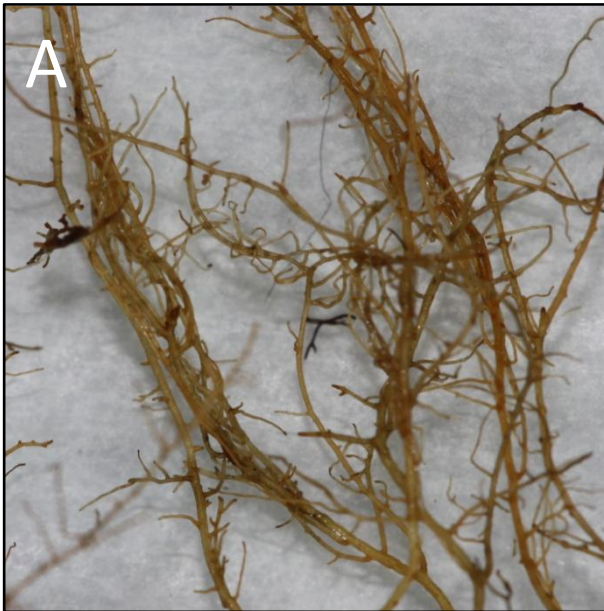


Field: 5 – “Healthy Field” [relatively healthy feeder roots]

Sample – 1 (A & B)



Sample – 2 (A & B)



Sample – 3 (A & B)

